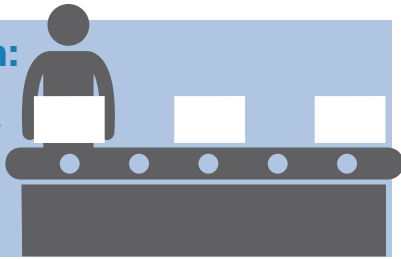


SQUARE 1 ART IS NOW HIRING!

Over 100 seasonal positions available.

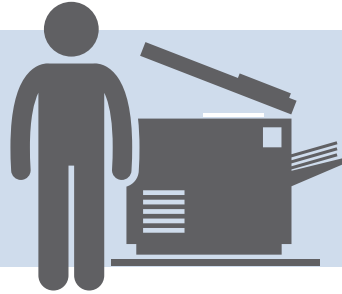
Production:

Assembly line packing-pressing



Print production:

Take transfer materials off printer and prepare for the production line



Capture:

Capture artwork with a camera



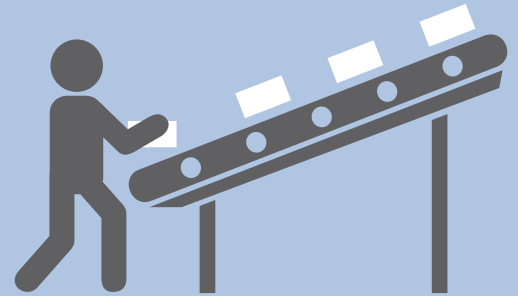
AOP Receiving:

Receive and organize art and orders



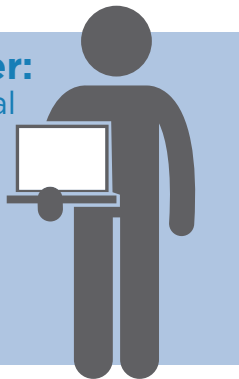
Match or Pick and Pack:

Prepare packages for shipment and ensure all packing specifications are met



Digital Art Adjuster:

Review and edit digital art for accuracy and quality (Adobe Photoshop® experience required)



Data Entry:

Must type min of 40wpm



Customer Care:

Answer phones and place orders, resolve issues



Canvas:

Work with hand tools to stretch the canvases



Schedule is M-F and some Saturdays, based on the production need. You must be available to work O/T if needed.

Shift 1: 6:00am - 2:30pm

Shift 2: 2:45pm - 11:15pm

(Must commit to a full shift)

Most positions require being able to lift up to 50 lbs.

Our Company conducts background checks and participates in the E-verify and Drugs Don't Work Here programs.

You can come in and fill out an application between the hours of 9:00am to 11:00am or 1:00pm to 3:00pm M-F

5470 Oakbrook Pkwy Suite E
Norcross, Ga 30093

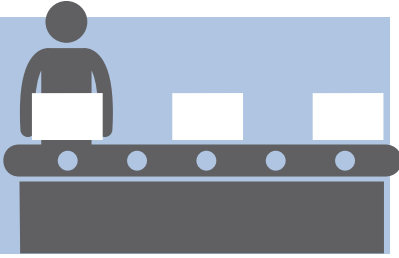
SQUARE 1 ART
IT STARTS WITH THE ART!

SQUARE 1 ART

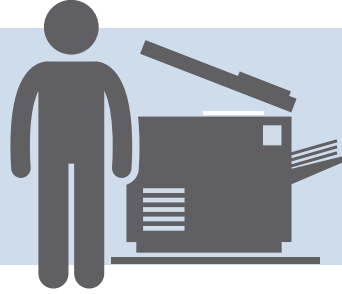
ESTA CONTRATANDO!

Mas de 100 posiciones temporales disponibles

Produccion:
Empacando,
prensando



Imprimiendo:
Sacar el material de la
imprimidora y preparar
para enviar al area
de produccion



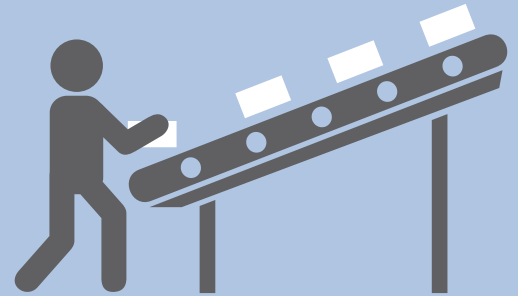
Captando:
Tomar
fotos a las
imagenes
con
camara



AOP Reciviendo:
Recibir y
organizar
las ordenes



Combinar:
Preparar los paquetes para
ser enviados, empacar
y desempacar



Ajustar Corregir:
Revisar y editar las
imagenes, se requiere
conocimiento del
programa Adobe
Photoshop®



**Entrar
informacion :**
Deve saver escribir
mas de 40 palabras
por minuto en la
computadora

**Servicio al
cliente :**

Constestar el
telefono,
hacer ordenes y
resolver cualquier
problema (dever
ser fluente en
Ingles)



Canvas:

Trabajar con
herramientas
y saver
extender el
material (lona)
para hacer las
imagenes



*Horarios de L-V y algunos Sabados basado en la produccion,
deve estar disponible a trabajar horas extra si es nesesario*

Shift 1: 6:00am - 2:30pm

Shift 2: 2:45pm - 11:15pm

(deven comprometerse a tiempo completo)

Casi todas las posiciones requieren levantar 50 libras

*Nuestra empresa lleva acabo verificaciones de antecedentes
criminales, examen de drogas y participa en el E-verify*

Puede venir y llenar una aplicacion en las siguientes horas
de 09:00am a 11:00am o 1:00pm a 3:00pm de L-V

5470 Oakbrook Pkwy Suite E
Norcross, Ga 30093

SQUARE 1 ART
IT STARTS WITH THE ART!